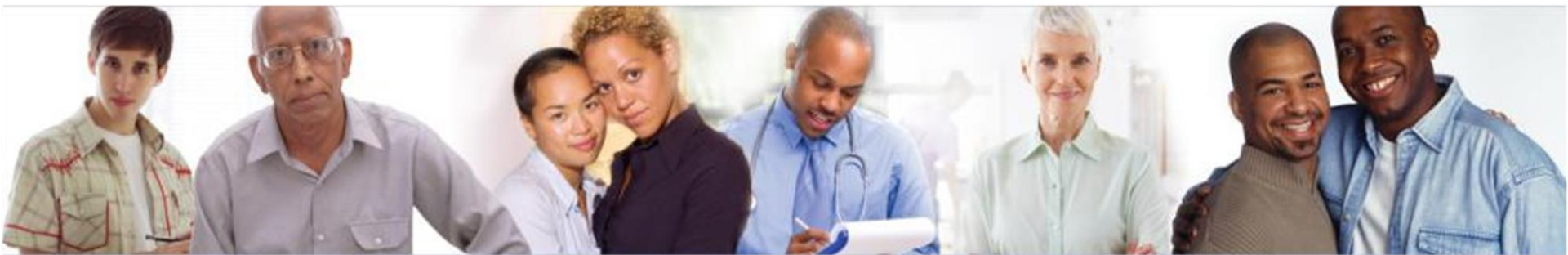




# EVIDENCE-INFORMED INTERVENTIONS (E2i)

The Coordinating Center for Technical Assistance

A PROGRAM OF THE FENWAY INSTITUTE



## Using Evidenced-Informed Interventions to Improve Health Outcomes among People Living with HIV

.....

Alex S. Keuroghlian, MD MPH

Principal Investigator, Evidence-informed Interventions Coordinating Center for Technical Assistance

Director, Division of Education and Training at The Fenway Institute

Assistant Professor of Psychiatry, Harvard Medical School

February 28, 2018 ~ 12:00 PM - 1:00 PM EST

# Project Overview

- Four-year initiative to facilitate implementation of evidence-informed interventions to reduce HIV health disparities and improve HIV-related outcomes:
  - Retention in care among PLWH
  - Treatment adherence among PLWH
  - Viral suppression for PLWH
- Implementation of effective and culturally-tailored, evidence-informed interventions that address social determinants

# Priority Focus Areas

- **Evidence-informed interventions (E2i)** will be adapted based on needs of target populations, using an implementation science framework.
- Initiative will focus on four priority areas:
  1. Improving HIV health outcomes for transgender women
  2. Improving HIV health outcomes for Black MSM
  3. Integrating behavioral health with primary medical care for PLWH
  4. Identifying and addressing trauma among PLWH

# Why These Four Priority Areas?

- Worse outcomes along the HIV Continuum Cascade (Linkage, Retention, Adherence, Viral Suppression)
- Sub-groups are not mutually exclusive, e.g. Black MSM may be depressed; transgender women may have experienced trauma
- Several common features based on
  - Minority Stress Model
  - Stigma and discriminatory life experiences
  - Internalized homophobia/transphobia
  - Syndemics

# Broad Definition of E2i

- **E2i initiative** encourages innovation and rapid dissemination of effective and culturally-relevant interventions:
  - Controlled and uncontrolled studies published in peer-reviewed journals
  - Demonstration projects (e.g., SPNS initiatives), both published and unpublished
  - Programs highlighted in peer-reviewed online repositories that may not have robust or published findings
  - Comprehensive toolkits and guidelines recommended by experts

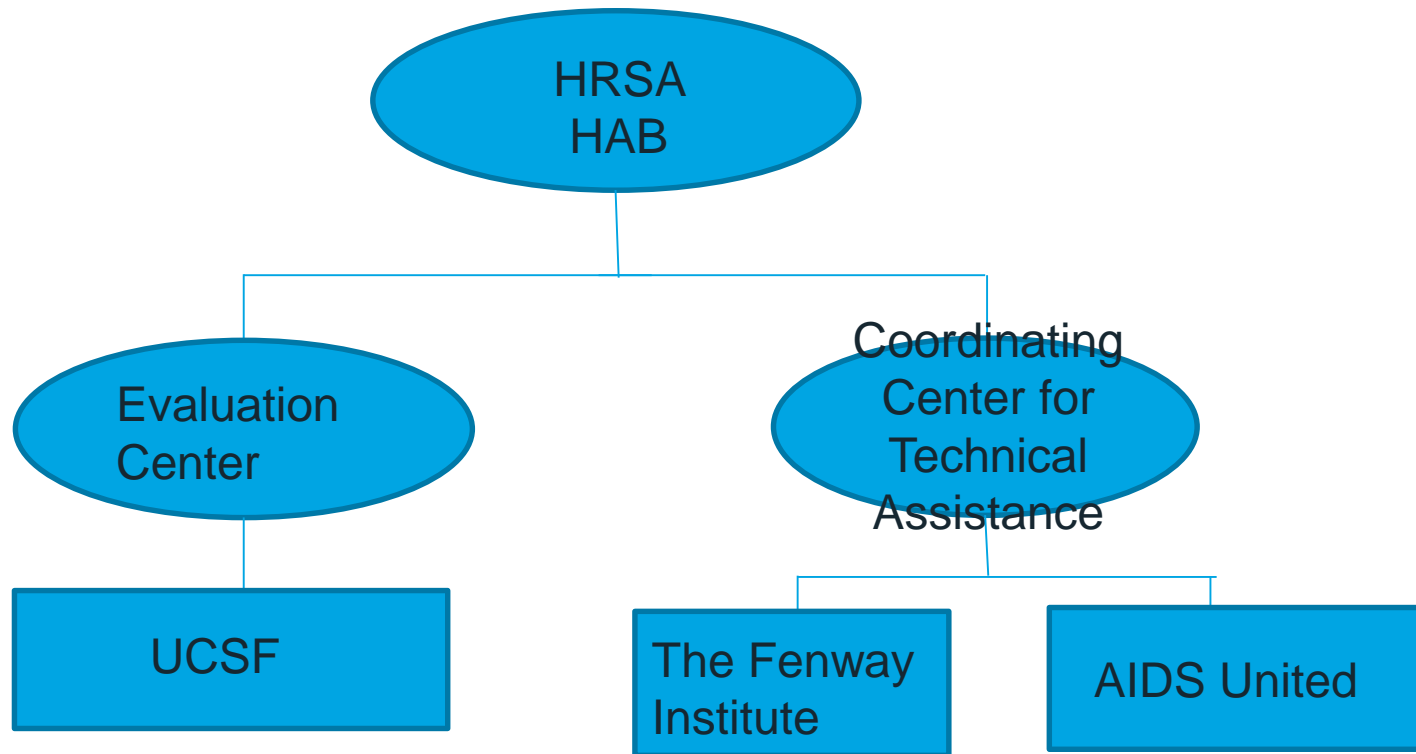
# E2i Coordinating Center for Technical Assistance

- **E2i Coordinating Center for Technical Assistance (CCTA)** consists of two partners:
  - *The Fenway Institute*
  - *AIDS United*

# E2i CCTA Activities

- The CCTA will solicit, select, issue, and monitor subawards of up to \$170,000 each, for up to 24 Ryan White HIV/AIDS Program (RWHAP) recipients across the United States, to support effective implementation of evidence-informed interventions.
- Selection of subawardees is based on both ‘need’ and ‘readiness’
- CCTA will deliver customized technical assistance (TA) to subawardees on implementation strategies
- Emphasis of implementation is the long-term sustainability and widespread dissemination of interventions
- The CCTA will collaborate with the E2i **Evaluation Center** (EC – *UCSF Center for AIDS Prevention Studies [CAPS]*) to assess site needs, target population, monitor fidelity, and measure the outcomes and impact

# E2i Initiative Structure



# Project Timeline (Year 1)

**August 30, 2017**—Developed Repository of > 130 interventions

**September 7, 2017**—Notified 35 Reviewers, 28 accepted

**September 29, 2017**—Internal Selection of 60 Interventions from >130

**October 31, 2017**—Ranking of 44 Interventions by 28 Reviewers

**November 10, 2017**— Selection of 32 Interventions

**November 15, 2017** —National Convening, Selection of 16 Interventions

**December 8, 2017**—RFP Released listing 16 interventions

**January 22, 2018**—Site Application Deadline

**March 1, 2018**—Sites selected

**April 15, 2018**—Formative/Startup funding begins

**July 15, 2018**—Implementation funding begins

# Review and Scoring by Expert Faculty and Community Advisors

## Focus Area 1: Transgender Women

**Nikki Calma\***

**Timothy Cavanaugh, MD**

**Madeline B. Deutsch, MD**

**Robert Garofalo, MD, MPH\***

**JoAnne Keatley, MSW**

**Tonia Poteat, PhD, MPH, PAC**

**Asa Radix, MD, MPH, FACP\***

**Sari Reisner, ScD (Facilitator)**

*\*not in attendance*

# Review and Scoring by Expert Faculty and Community Advisors

## Focus Area 2: Black MSM

**Sheldon Fields, PhD, RN**

**Catherine H. Maulsby, PhD, MPH**

**Ken Mayer, MD (Facilitator)**

**Leandro Mena, MD, MPH**

**Charles Stephens**

**Darrell Wheeler, PhD, MPH, ACSW**

*\*not in attendance*

# Review and Scoring by Expert Faculty and Community Advisors

## Focus Area 3: Behavioral Health Integration

**Cynthia Gomez, PhD**

**Michael Kauth, PhD\***

**Alex Keuroghlian, MD, MPH (Facilitator)**

**Jane Powers, LICSW**

**Ron Stall, PhD, MPH**

*\*not in attendance*

# Review and Scoring by Expert Faculty and Community Advisors

## Focus Area 4: Identifying and Addressing Trauma

**Maggie Chartier, PsyD, MPH**

**Maggie Czarnogorski, MD, MPH**

**Sannisha Dale, PhD**

**Cheryl Gore-Felton, PhD**

**Erin Falvey, PhD**

**Naina Khanna**

**Conall O'Cleirigh, PhD (Facilitator)**

**Jillian Shipherd, PhD\***

*\*not in attendance*

# Review and Scoring Criteria

- Type of Study Design
  - Relevance for target populations living with HIV?
- Strength of Evidence
- Quality of Intervention
- Potential for Acceptability at RWHAP sites
  - Cultural appropriateness for target populations living with HIV?
  - Cultural specificity for target populations living with HIV?
  - Appeal to and acceptability for target populations living with HIV?
- Potential for Feasibility at RWHAP Sites
- Potential for Replication at RWHAP Sites

# Four Focus Area Workgroups

- Workgroup in each focus area:
  - Discussed eight finalist interventions
  - Recommended up to four interventions for national implementation at RWHAP sites
  - Recommendations based on quantitative scores, qualitative feedback, diversification of targets along HIV care cascade as well as intervention modalities

---

Healing Our Women for Trans  
Women (HOW-T)

---

Healthy Divas (Divas)

---

Life Skills

---

Transgender Women Engagement  
and Entry To Care (T.W.E.E.T.)

**Selected  
Interventions  
for  
Transgender  
Women**

---

Antiretroviral Treatment and Access Study  
(ARTAS)

---

Motivational Interviewing Peer Outreach  
(MI Peers)

---

Project Connect and Retention through  
Enhanced Contacts (Connect)

---

Text Messaging Intervention to Improve  
Antiretroviral Adherence among HIV-  
Positive Youth (TXTXT)

**Selected  
Interventions  
for  
Black Men  
who have Sex  
with Men  
(MSM)**

---

AETC AHRQ BHI Toolkits  
(AETC/AHRQ)

---

Clinic-based Buprenorphine  
Treatment (BUP)

---

Improving Mood-Promoting Access  
to Collaborative Treatment (IMPACT)

---

Screening, Brief Intervention, and  
Referral to Treatment (SBIRT)

**Selected  
Interventions  
for  
Behavioral  
Health**

---

Cognitive Processing Therapy (CPT)

---

Trauma Informed Approach & Coordinated  
HIV Assistance and Navigation for Growth  
and Empowerment (TIA/CHANGE)

---

Seeking Safety (SS)

---

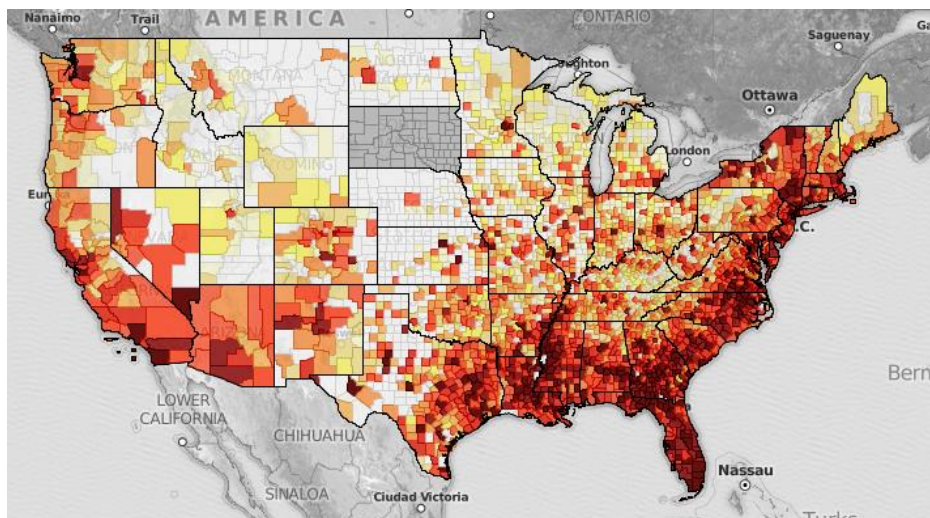
Written Emotional Disclosure Therapy for  
PTSD (EDT)

**Selected  
Interventions  
for  
Identifying  
and  
Addressing  
Trauma**

# Site Eligibility

- Currently-funded Ryan White HIV/AIDS Program recipients or sub-recipients providing direct services, inclusive of sites providing core medical services and/or support services directly to clients
- Not currently implementing the same or a similar intervention as the one selected under this RFP for funding
- Must demonstrate a pre-existing relationship with an Outpatient Ambulatory Health Services (OAHS) provider or in-house OAHS that will be able to collect and report to the applicant viral load (VL) tests, retention, antiretroviral treatment (ART) adherence, etc.

# Site Selection Process

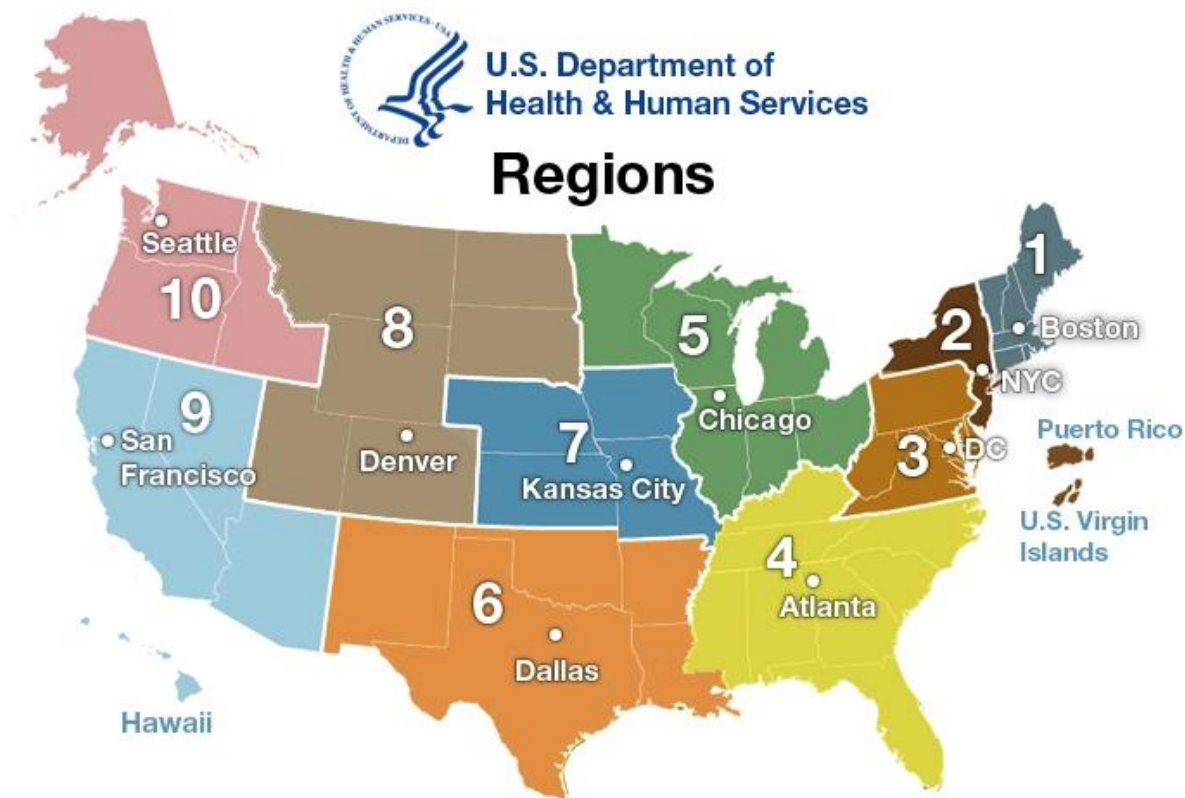


- Ability to reach and serve population
- Geographic distribution
- Readiness to implement the selected intervention
- Ability to collect data for evaluation



U.S. Department of  
Health & Human Services

## Regions



EVIDENCE-INFORMED  
INTERVENTIONS (E2i)

The Coordinating Center for Technical Assistance



EVIDENCE-INFORMED  
INTERVENTIONS (E2i)

The Coordinating Center for Technical Assistance

# Timeline

DATE	ACTIVITY
December 8, 2017	Request for Proposals Released
December 14, 2017	Technical Assistance Webinar (TODAY)
January 22, 2018, 9:00 PM EST	Request for Proposals Due
March 15, 2018	Notification of Award
April 15, 2018	Grant Starts
July 12 & 13, 2018	Grantee Convening, Washington, DC Metro Area

# Meet The Fenway Institute Team



**Alex Keuroghlian, MD,**  
MPH Principal  
Investigator



**Linda Marc, Sc.D.,**  
MPH, National  
Implementation  
Director



**Massah Massaquoi**  
MPH, National  
Coordinator



**Sarah Mitnick**  
Operations Manager -  
Division of Education  
and Training



**Tim Michael,** Program  
Coordinator,  
Division of Education  
and Training



**Reagin Wiklund,**  
Program Assistant

# Meet the AIDS United Team



**Valerie Rochester**  
Vice President  
for Program  
Strategy



**Erin Nortrup,  
LCSW**  
Director of  
Program  
Operations



**Venton Hill-Jones,  
MSHCAD**  
Senior Program  
Manager



**Marvell Terry II**  
Program Manager



**Hannah Bryant**  
Program Manager

# Thank you!

Email: [AKeuroghlian@fenwayhealth.org](mailto:AKeuroghlian@fenwayhealth.org)

