

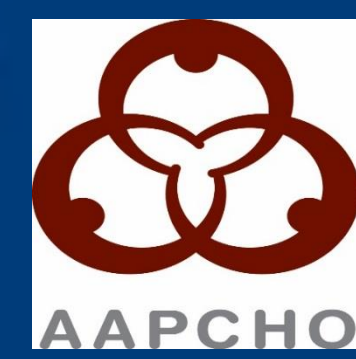
# Enhancing Community Health Center Patient-Centered Research Engagement (EnCoRE)

[www.CDNetwork.org/encore](http://www.CDNetwork.org/encore)

Jonathan N. Tobin<sup>1</sup>, Michelle Proser<sup>2</sup>, Michelle Jester<sup>2</sup>, Rosy Chang Weir<sup>3</sup>, Danielle Lazar<sup>4</sup>, Shalini Tendulkar<sup>5</sup>, Vicki Young<sup>6</sup>, Leah Zallman<sup>5</sup>, and Mickey Eder<sup>7</sup>

<sup>1</sup>Clinical Directors Network, <sup>2</sup>The National Association of Community Health Centers, <sup>3</sup>Association of Asian Pacific Community Health Organizations, <sup>4</sup>Access Community Health Network, <sup>5</sup>Institute for Community Health, <sup>6</sup>South

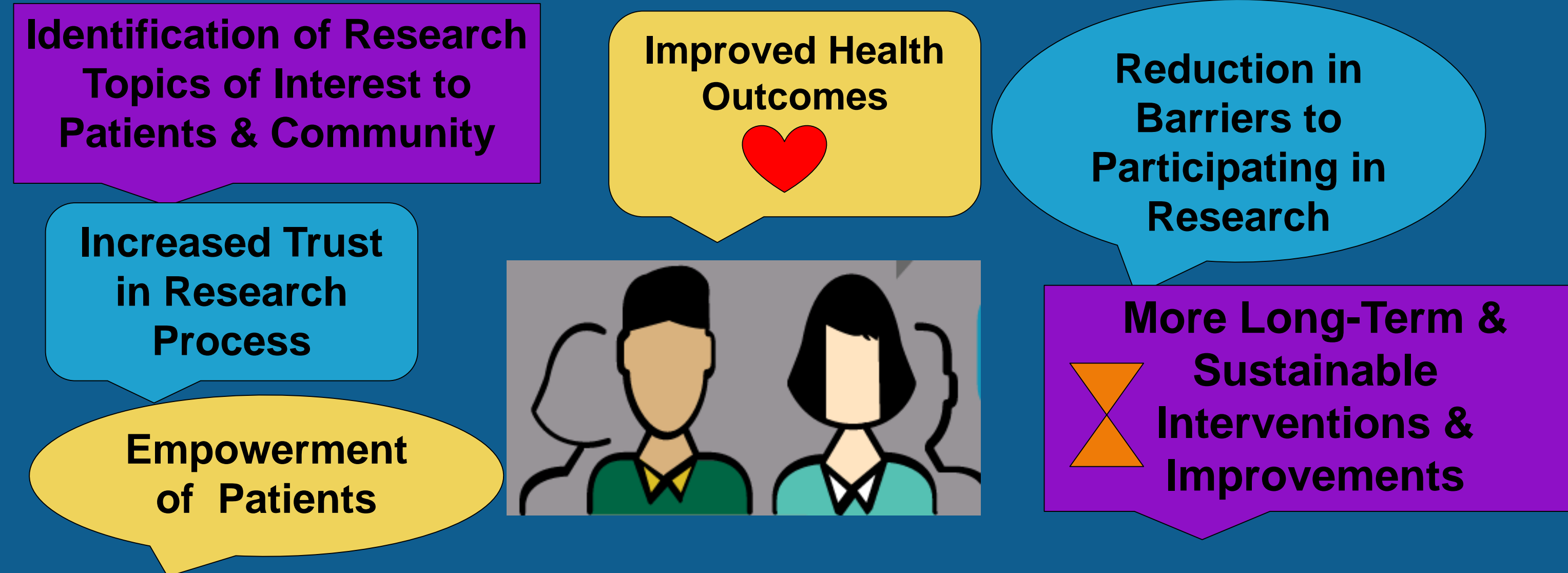
Carolina Primary Health Care Association, <sup>7</sup>University of Minnesota.  
Funding: PCORI NCHR 1000-30-10-10 EA-0001



## Benefits of Patient-Centered Research

Patient-centered research is the meaningful involvement of patients, caregivers, clinicians, and other healthcare stakeholders throughout the research process, from topic selection through design and conduct of research to dissemination.

There are many benefits to patient-centered research, including:

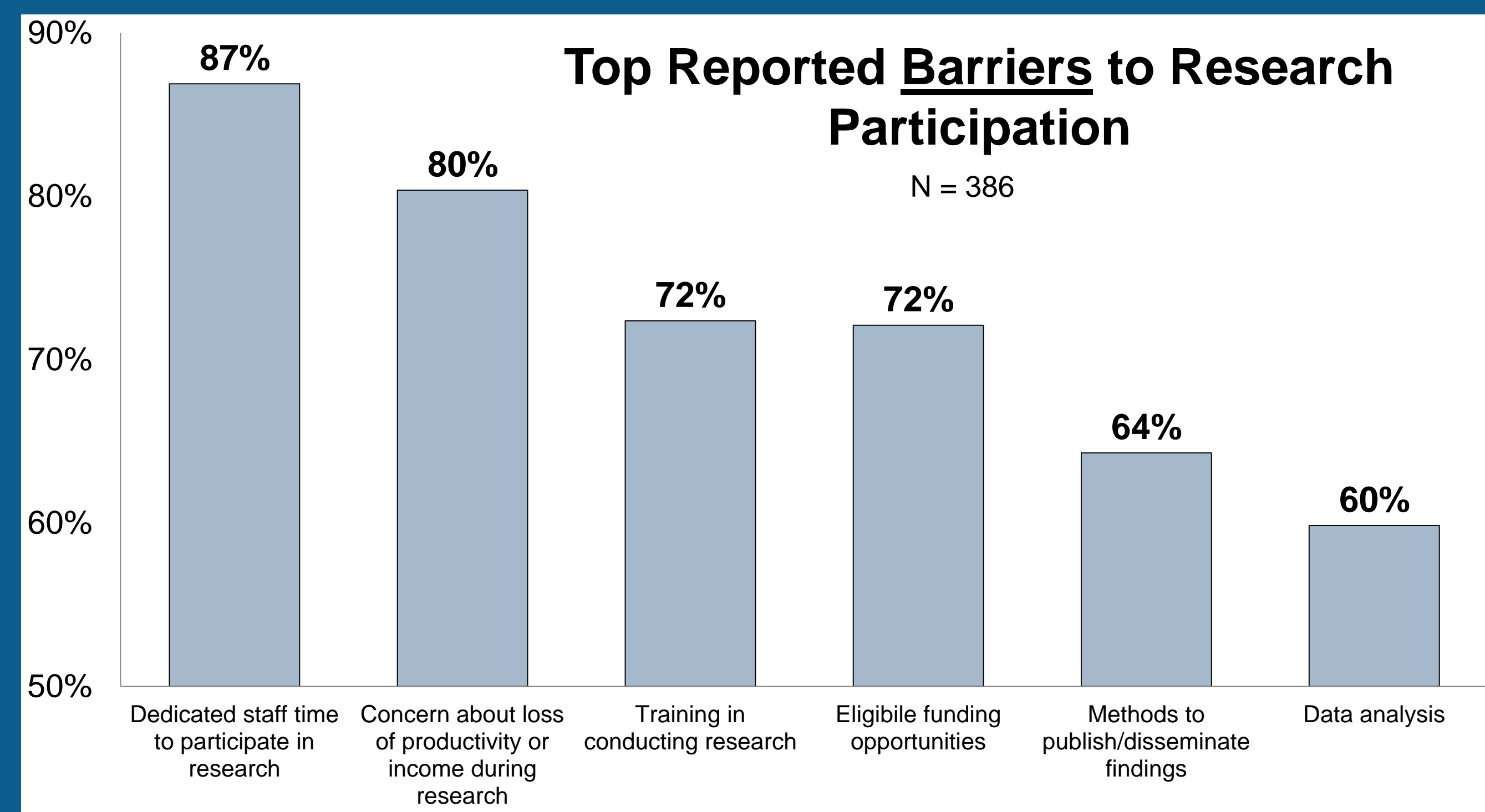


Health centers are ideal settings for engaging patients, family members, and staff in research given their:

- Unique care model
- Large, diverse, and growing patient population
- Knowledge and trust of the community

## Health Center Need

Even though health centers are ideal settings for patient-centered research, they experience barriers to research participation.



Jester M, Proser M, Shin P, Weir RC, Young V, Payne P, et al. National survey of health centers' research participation: activities and needs. CES4Health.

## Resource to Build Patient-Centered Capacity

To increase health centers' capacity to participate in patient-centered research, the Clinical Directors Network, the National Association of Community Health Centers, the Association of Asian Pacific Community Health Organizations, the Institute for Community Health, Access Community Health Network, and the South Carolina Primary Health Care Association came together to create EnCoRE: Enhancing Community Health Center Patient-Centered Research Engagement.

EnCoRE is an interactive Learning Community consisting of health center staff and patients centered around a webinar curriculum that walks through the steps needed to develop a patient-centered research proposal.

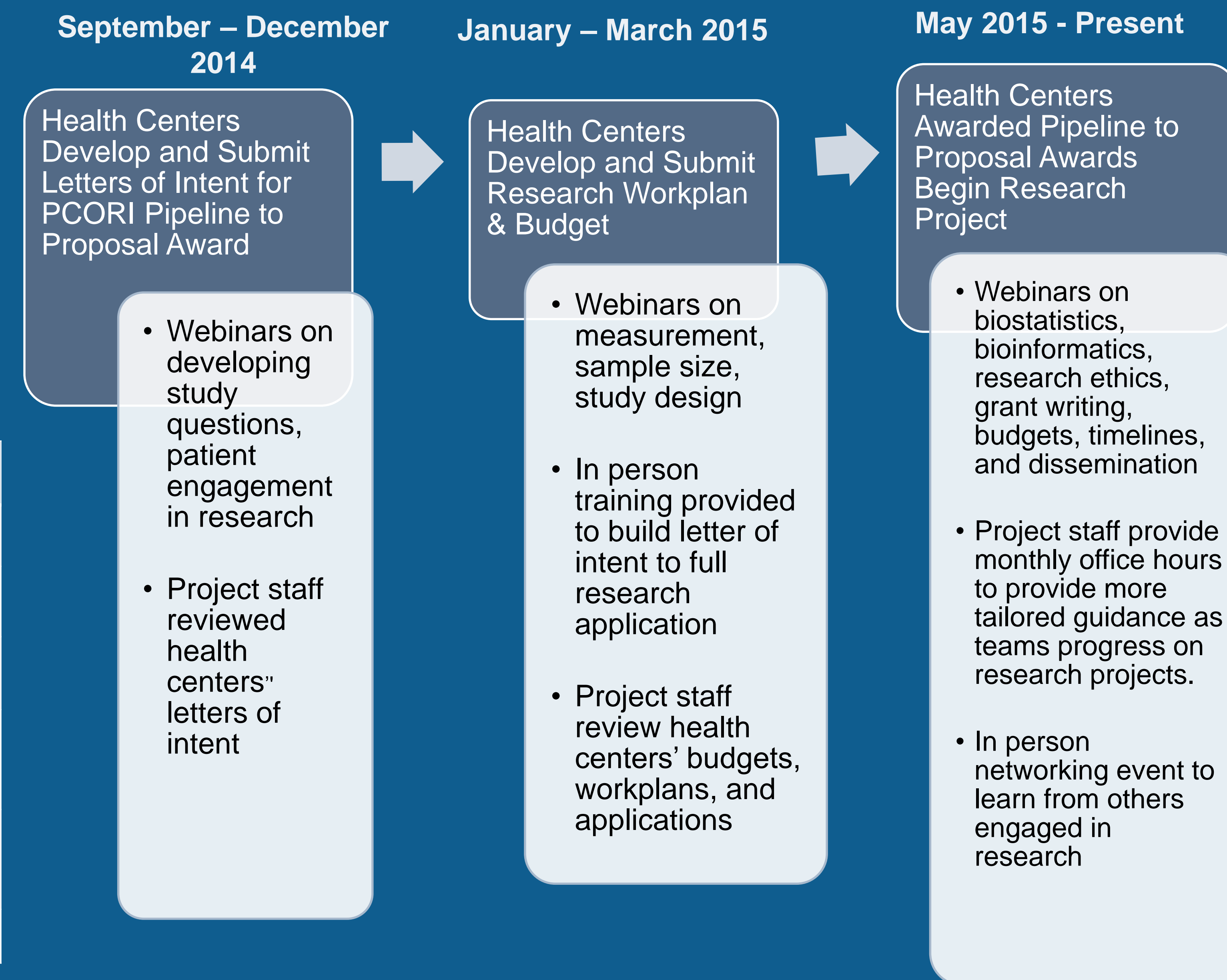
### EnCoRE Training Topics

Developing Study Questions	Biostatistics
Patient Engagement in Research	Bioinformatics
Community Engagement in Research	Research Ethics, IRB
Measurement and Measurement Analysis	Grant Writing, Project Planning, & Fundraising
Sample Size, Sampling Methods	Preparing Budgets, Work Plans, & Timelines
Study Design	Dissemination & Presentation

EnCoRE provides didactic content in an interactive format, relating research concepts to everyday, on-the-ground situations. It is free to use in modules or as a whole and is available for Continuing Education (CE) credit. It can be viewed by topic or as a whole curriculum at [www.CDNetwork.org/encore](http://www.CDNetwork.org/encore).



## Mapping EnCoRE Training Model to PCORI Pipeline to Proposal Award



## Achievements to Date

100% of Teams Who Submitted Pipeline to Proposal Applications Were Accepted for Tier 1 Awards

Established a Pathway to Actualize Vision of Patient-Engaged Research

Built Confidence and Capacity for Health Center Patients and Staff to Present and Discuss Research Ideas and Methods

Positive Feedback from Participants

Disseminated at National Conferences